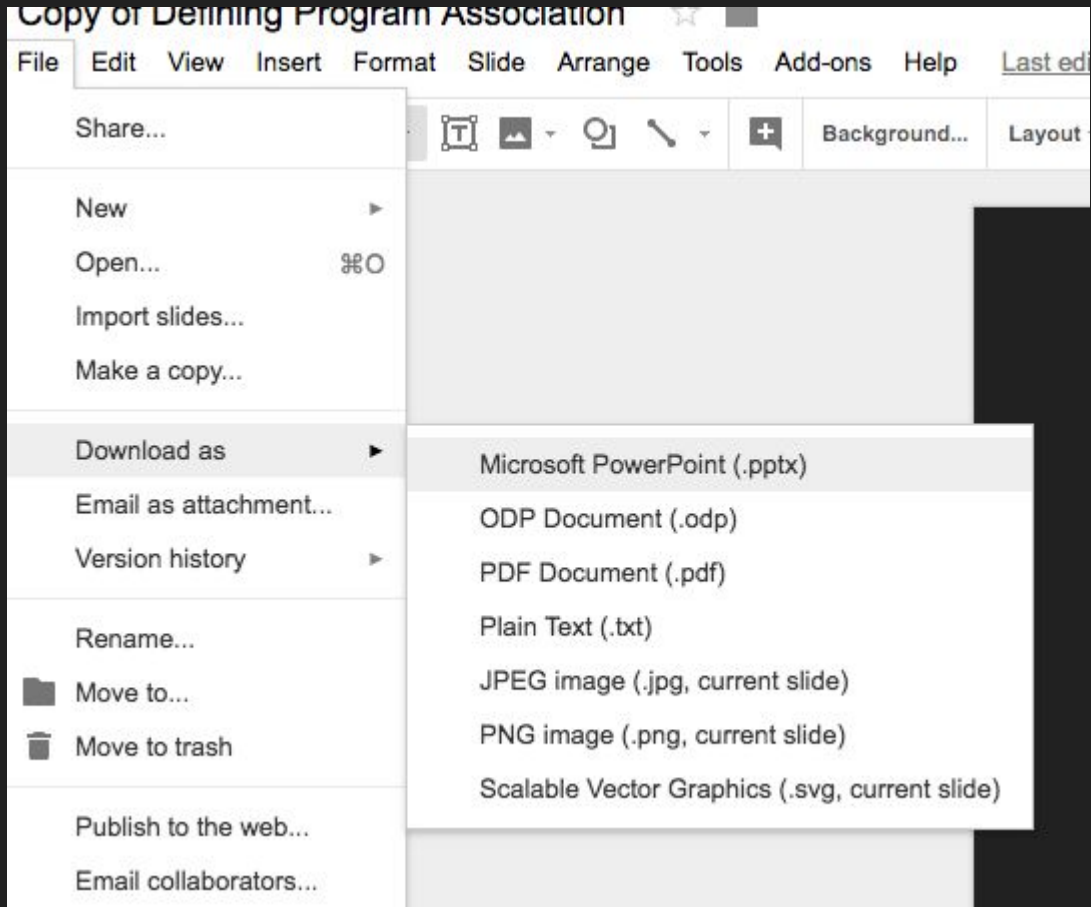
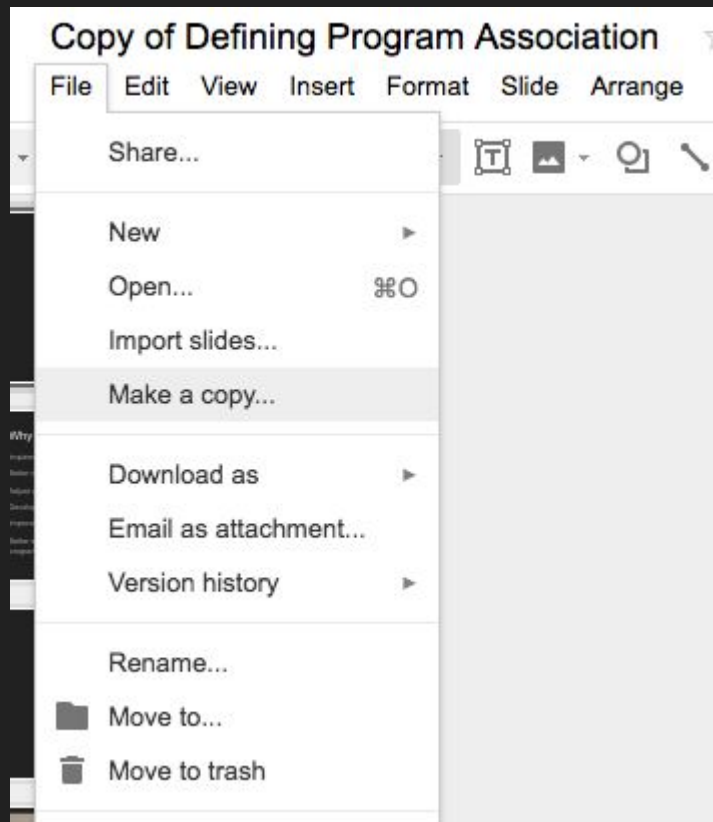


Please make a copy or download this presentation to ensure others have a clean template



Local Programs and Associations



Why do this?

Implementation of CBC, MRT, and other mandates from UW-System

Better define roles and responsibilities of all parties; determine accountability.

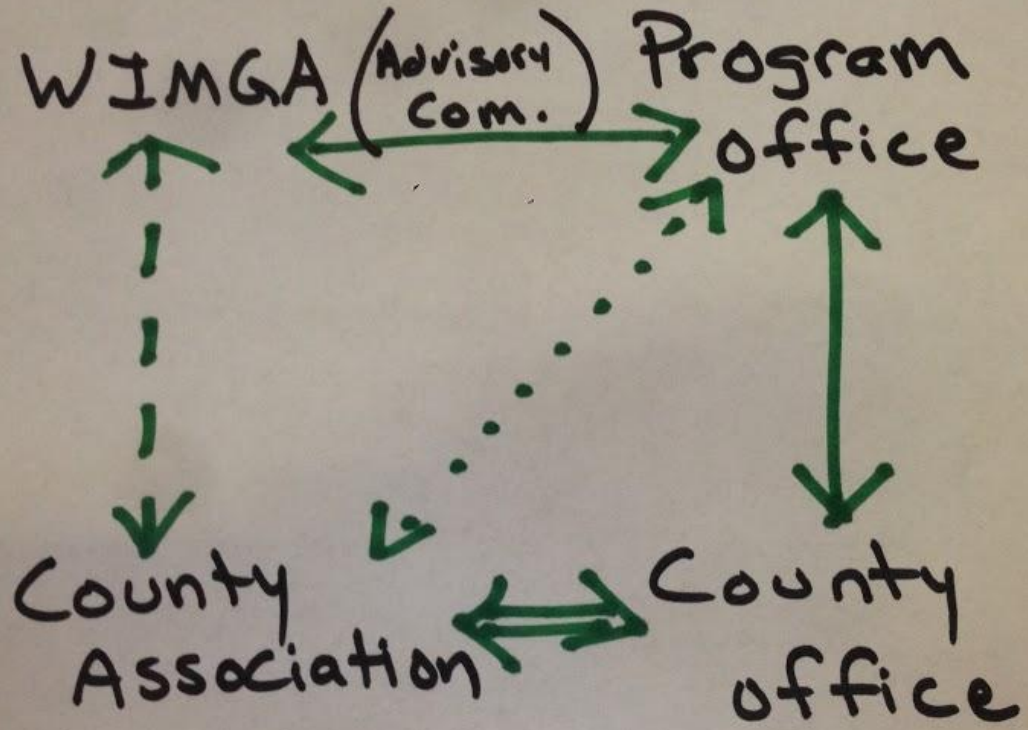
Adjust alignment to current needs and issues

Develop necessary MOUs and update existing bylaws

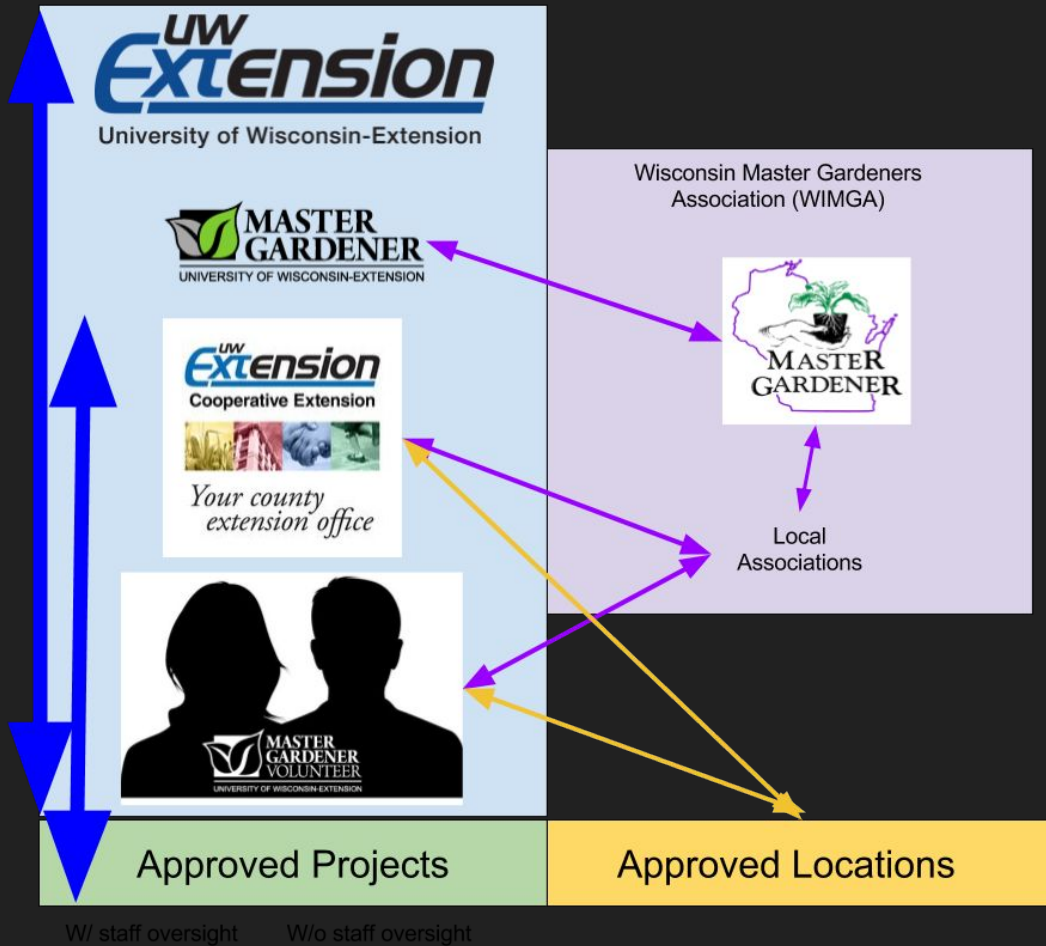
Improve the functioning of both MGP and WIMGA; strengthen partnership

Better support the educators and volunteers at the local level for an improved program experience

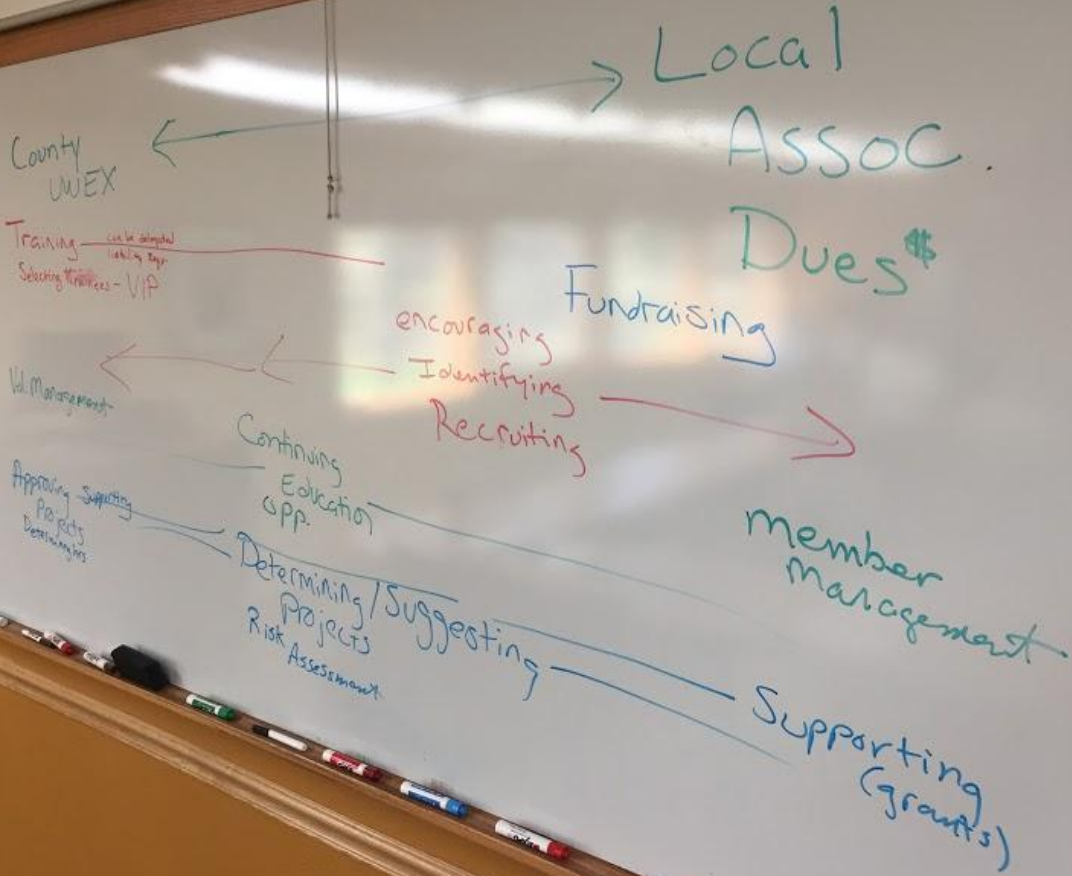
Recent History



March 2015
(first version created, evolved)



W/ staff oversight W/o staff oversight



MG Program Office	County Office	MG Volunteer	Local Assoc.	WIMGA
<p>Support Training efforts Reporting CBC/VIP Vol Development Support Offices and Volunteers</p>	<p>Screen volunteers, provide orientation, direct oversight, project approval, deliver training, report to MG program office Collect \$ for training Provides liability*</p>	<p>Volunteers in community on selected projects or delegated tasks from county office Receives training Reports efforts to county office Pay for training <i>Pays dues to WIMGA*</i> <i>Receives WIMGA newsletter</i></p>	<p><i>Develop and evaluate potential (for staff approval)</i> <i>Provides social component</i> <i>Oversees project reporting and organization (in conjunction w/ staff), Give scholarship</i> <i>Financially support select projects</i> <i>Collect dues (send to WIMGA)</i> <i>Apply for <u>WIMGA</u> grants</i> <i>Host/attend conference</i> <i>Submit bylaws to WIMGA</i> <i>Send list of updates</i></p> <p><i>Provide liability coverage, directors and officers insurance</i></p>	<p>Collect Dues (collect from Association). Grants Conference Newsletter Awards* Support WIMGA members Review bylaws</p>

Today's Activity

Master Gardener Volunteer

What does Extension do?

LOCAL / COUNTY
MG PROGRAM Workgroups

LOCAL / COUNTY
ASSOCIATION Workgroups

What does WIMGA do?

Function

Description

Description

Description

Description

Master Gardener Volunteer

What does Extension do?

LOCAL / COUNTY
MG PROGRAM Workgroups

LOCAL / COUNTY
ASSOCIATION Workgroups

What does WIMGA do?

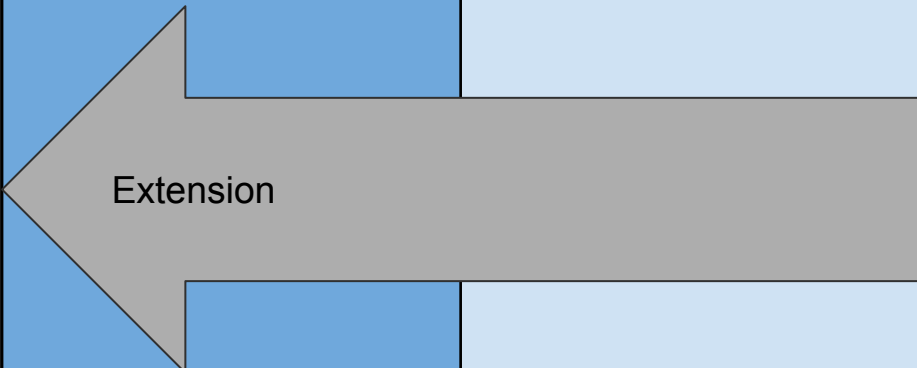
Function

Description

Description

Description

Description



Extension

Master Gardener Volunteer

What does Extension do?

LOCAL / COUNTY
MG PROGRAM Workgroups

LOCAL / COUNTY
ASSOCIATION Workgroups

What does WIMGA do?

Function

Description

Description

Description

Description

Extension

WIMGA

Master Gardener Volunteer

What does Extension do?

LOCAL / COUNTY
MG PROGRAM Workgroups

LOCAL / COUNTY
ASSOCIATION Workgroups

What does WIMGA do?

Function

Description

Description

Description

Description

Extension

WIMGA

Let's do it!

Master Gardener Volunteer

What does Extension do?

**LOCAL / COUNTY
MG PROGRAM Workgroups**

**LOCAL / COUNTY
ASSOCIATION Workgroups**

What does WIMGA do?

Education

Training (Level 1, +)

Requirement: *complete Level 1 training and 10 hours of continuing education each year*

Assist with Level 1 and continuing education needs of certified MGVs in county

Encouragement to participate and host statewide conference

Statewide Conference
Speaker's Bureau

Master Gardener Volunteer

What does Extension do?

**LOCAL / COUNTY
MG PROGRAM Workgroups**

**LOCAL / COUNTY
ASSOCIATION Workgroups**

What does WIMGA do?

Reporting

Certification & Reporting

Requirement: *Report efforts*

Assist with collecting and tabulating hours; report, ensuring proper information is collected for annual report

Membership: Solicit member,
Collect dues

Collect Dues

Master Gardener Volunteer

What does Extension do?

**LOCAL / COUNTY
MG PROGRAM Workgroups**

**LOCAL / COUNTY
ASSOCIATION Workgroups**

What does WIMGA do?

Projects

Approve Projects

Requirement: *for liability and
USDA funding*

Assist with review and vetting
appropriateness of volunteer
projects

WIMGA grants for projects, other
financial support

Award grants

Master Gardener Volunteer

What does Extension do?

LOCAL / COUNTY
MG PROGRAM Workgroups

LOCAL / COUNTY
ASSOCIATION Workgroups

What does WIMGA do?

Communications

Communications

Note: *need to define for MOU*

ADA and non-discrimination requirements on all things with MGP logo on it--- including websites.

Assist with appropriate and timely updates related to local program; newsletters, social media, phone, email, website

Contribute to statewide WIMGA newsletter

Newsletter

Master Gardener Volunteer

What does Extension do?	LOCAL / COUNTY MG PROGRAM Workgroups	LOCAL / COUNTY ASSOCIATION Workgroups	What does WIMGA do?
-------------------------	---	--	---------------------

Membership

<p>Selection and Development of Volunteers</p> <p>Requirement: <i>Liability, CBC, etc.</i></p> <p><i>Dues are not required at state level-- only continuing education, volunteer hours, and mandated forms define "membership"</i></p>	Assist with formal and informal recognition of volunteer efforts; cards and other forms of appreciation	Mentor group, awards	Awards & Mentoring
--	---	----------------------	--------------------

Next Steps:

- Engage local groups in this conversation
- Prepare for UW-Madison
 - MOUs
 - Define Volunteers
 - ????

